

TRAIL SEGMENT 1 - STA. 0+00 - 44+22.21

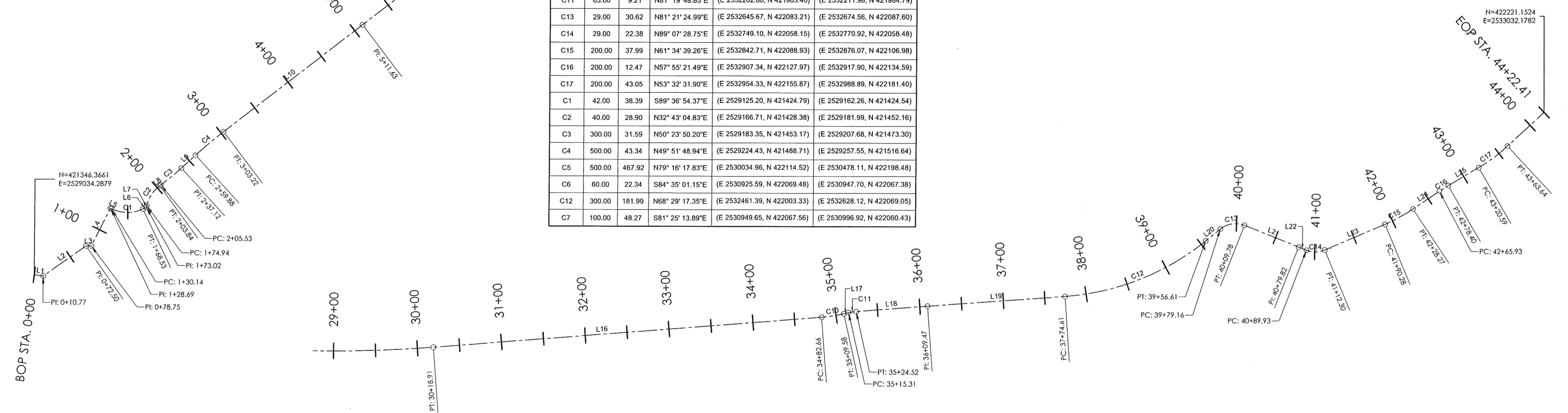
Line Table				
Line #	Length	Direction	Start Point	End Point
L1	10.77	S82° 32' 20.23"E	(E 2529034.29, N 421346.37)	(E 2529044.97, N 421344.97)
L2	61.73	N54° 44' 19.06"E	(E 2529044.97, N 421344.97)	(E 2529095.38, N 421380.60)
L3	6.25	N88° 38' 48.32"E	(E 2529095.38, N 421380.60)	(E 2529101.62, N 421380.75)
L4	49.94	N26° 29' 43.03"E	(E 2529101.62, N 421380.75)	(E 2529123.90, N 421425.44)
L5	1.45	S63° 25' 55.70"E	(E 2529123.90, N 421425.44)	(E 2529125.20, N 421424.79)
L6	4.50	N64° 12' 06.97"E	(E 2529125.20, N 421424.79)	(E 2529166.31, N 421426.50)
L7	1.92	N12° 01' 18.44"E	(E 2529166.31, N 421426.50)	(E 2529166.71, N 421428.38)
L8	1.69	N53° 24' 51.23"E	(E 2529166.71, N 421428.38)	(E 2529183.35, N 421453.17)
L9	22.76	N47° 22' 49.18"E	(E 2529183.35, N 421453.17)	(E 2529224.43, N 421488.71)
L10	208.41	N52° 20' 48.71"E	(E 2529224.43, N 421488.71)	(E 2529422.55, N 421643.95)
L11	772.32	N52° 27' 42.30"E	(E 2529422.55, N 421643.95)	(E 2530034.96, N 422114.52)
L12	465.71	S73° 55' 06.65"E	(E 2530034.96, N 422114.52)	(E 2530925.59, N 422069.48)
L13	1.96	N84° 45' 04.34"E	(E 2530925.59, N 422069.48)	(E 2530949.65, N 422067.56)
L14	72.72	S67° 35' 32.11"E	(E 2530949.65, N 422067.56)	(E 2531064.15, N 422032.71)
L15	20.60	S73° 17' 21.89"E	(E 2531064.15, N 422032.71)	(E 2531158.81, N 422000.17)
L16	463.75	N85° 28' 36.59"E	(E 2531158.81, N 422000.17)	(E 2532170.71, N 421978.07)
L17	5.73	N77° 08' 24.80"E	(E 2532170.71, N 421978.07)	(E 2532202.88, N 421983.40)
L18	84.95	N85° 31' 12.91"E	(E 2532202.88, N 421983.40)	(E 2532296.67, N 421991.43)
L19	165.15	N85° 52' 02.00"E	(E 2532296.67, N 421991.43)	(E 2532461.39, N 422003.33)
L20	22.56	N51° 06' 32.70"E	(E 2532461.39, N 422003.33)	(E 2532628.12, N 422069.05)

TRAIL SEGMENT 1 - STA. 0+00 - 44+22.21

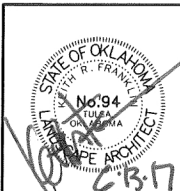
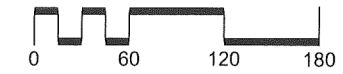
Line Table				
Line #	Length	Direction	Start Point	End Point
L21	70.04	S68° 23' 42.73"E	(E 2532674.56, N 422087.60)	(E 2532739.68, N 422061.81)
L22	10.11	S68° 46' 10.85"E	(E 2532739.68, N 422061.81)	(E 2532749.10, N 422058.15)
L23	77.98	N67° 01' 08.36"E	(E 2532749.10, N 422058.15)	(E 2532842.71, N 422088.93)
L24	37.66	N56° 08' 10.16"E	(E 2532842.71, N 422088.93)	(E 2532907.34, N 422127.97)
L25	42.19	N59° 42' 32.81"E	(E 2532907.34, N 422127.97)	(E 2532954.33, N 422155.87)

TRAIL SEGMENT 1 - STA. 0+00 - 44+22.21

Curve Table					
Curve #	Radius	Length	Chord Direction	Start Point	End Point
C8	800.00	79.55	S70° 26' 27.00"E	(E 2531064.15, N 422032.71)	(E 2531139.08, N 422006.09)
C9	1500.00	555.90	S83° 54' 22.65"E	(E 2531139.08, N 422006.09)	(E 2531708.41, N 421941.49)
C10	185.00	26.92	N81° 18' 30.69"E	(E 2531708.41, N 421941.49)	(E 2532197.30, N 421982.13)
C11	63.00	9.21	N81° 19' 48.85"E	(E 2532197.30, N 421982.13)	(E 2532211.98, N 421984.79)
C13	29.00	30.62	N81° 21' 24.99"E	(E 2532211.98, N 421984.79)	(E 2532645.67, N 422083.21)
C14	29.00	22.38	N89° 07' 28.75"E	(E 2532645.67, N 422083.21)	(E 2532770.92, N 422058.15)
C15	200.00	37.99	N61° 34' 39.26"E	(E 2532770.92, N 422058.15)	(E 2532842.71, N 422088.93)
C16	200.00	12.47	N57° 55' 21.49"E	(E 2532842.71, N 422088.93)	(E 2532907.34, N 422127.97)
C17	200.00	43.05	N53° 32' 31.90"E	(E 2532907.34, N 422127.97)	(E 2532988.89, N 422181.40)
C1	42.00	38.39	S89° 36' 54.37"E	(E 2532988.89, N 422181.40)	(E 2529125.20, N 421424.79)
C2	40.00	28.90	N32° 43' 04.83"E	(E 2529125.20, N 421424.79)	(E 2529166.71, N 421428.38)
C3	300.00	31.59	N50° 23' 50.20"E	(E 2529166.71, N 421428.38)	(E 2529207.68, N 421473.30)
C4	500.00	43.34	N49° 51' 48.94"E	(E 2529207.68, N 421473.30)	(E 2529224.43, N 421488.71)
C5	500.00	467.92	N79° 16' 17.83"E	(E 2529224.43, N 421488.71)	(E 2530034.96, N 422114.52)
C6	60.00	22.34	S84° 35' 01.15"E	(E 2530034.96, N 422114.52)	(E 2530925.59, N 422069.48)
C12	300.00	181.99	N68° 29' 17.35"E	(E 2530925.59, N 422069.48)	(E 2532628.12, N 422069.05)
C7	100.00	48.27	S81° 25' 13.89"E	(E 2532628.12, N 422069.05)	(E 2530996.92, N 422064.43)



F:\582 Sand Springs Park Road Trail\Final\Civil 3D - Base Files\ParkRoadTrail-Base\FinalR1.dwg, 6/6/2017 12:43:36 PM



City of Sand Springs - Park Road Trail		PREPARED BY: LANDPLAN CONSULTANTS		Tulsa County
Design	JM	7/16		
Drawn	JM/BB	8/16		
Checked	KF/JM	6/17		
Approved				
Squad	LandPlan			
STATE JOB NO. 28844(04)			Sheet No. 12 of 62	